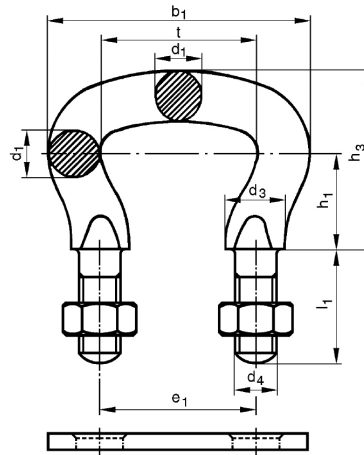


## CHAIN SHACKLE

# CHAIN SHACKLE

## DIN 745 AND DIN 5699



Chain shackle DIN 5699  
Distance plate

| pitch<br>$t = e_1$<br>mm | $b_1$<br>mm | $d_1$<br>mm | $d_3$<br>mm | $d_4$<br>mm | $h_1$<br>mm | $h_3$<br>mm | $l_1$<br>mm | applicable chain ends<br>for wheels |                            | weigh<br>with<br>2 nuts<br>kg/pc. |
|--------------------------|-------------|-------------|-------------|-------------|-------------|-------------|-------------|-------------------------------------|----------------------------|-----------------------------------|
|                          |             |             |             |             |             |             |             | plain<br>DIN 764/766<br>d mm        | toothed<br>DIN 764<br>d mm |                                   |
| 45                       | 73/75       | 11,5/13     | 15/17       | M10/M12     | 20/28       | 40/53       | 25/30       | 10/13                               | 13                         | 0,26                              |
| 56                       | 92          | 15/16       | 19          | M12/M14     | 25/34       | 50/64       | 32/35       | 13/16                               | 16                         | 0,34                              |
| 63                       | 105         | 18          | 23          | M16         | 30/37       | 60/71       | 40          | 16/18                               | 18                         | 0,60                              |
| 70                       | 116         | 20          | 28          | M20         | 34/42       | 68/80       | 45          | 18/20                               | 20                         | 0,87                              |
| 80                       | 132         | 23          | 31          | M20         | 37/47       | 74/89       | 45          | 20/23                               | 23                         | 1,12                              |
| 91                       | 149         | 26          | 34          | M24         | 43/52       | 86/99       | 55          | 23/26                               | 26                         | 1,86                              |
| 105                      | 173         | 30          | 38          | M24         | 50/60       | 100/114     | 55          | 26/30                               | 30                         | 2,56                              |
| 126                      | 206         | 36          | 44          | M30         | 59/71       | 118/134     | 70/65       | 30/-                                | 36                         | 4,40                              |
| 136                      | 224         | 39          | 50          | M36         | 76          | 146         | 75          | 36/-                                | 39                         | 6,30                              |
| 147                      | 239/241     | 42          | 50          | M30/M36     | 68/81       | 136/157     | 70/75       | 39/-                                | 42                         | 7,30                              |

All statements are not binding, technical alterations subject to change.

### FOR CONVEYING OF

Cement, sand, stones, gravel, asphalt, coarse-grained materials, heavy-wearing materials, hot materials

### FOR USE AT

Cement industry, stones and earths industry, asphalt mixing plants, lime- and gypsum industry, grit treatment, recycling plants

### MATERIAL

C 45 heat-treated and additionally hardened in the interlink areas, hardening depth  $0,1 \times d$ , surface hardness min. 600 HV 10  
Special steel (42 CrMo 4 oder 15 CrNi 6) available on request

### DESIGN

black or oiled  
without or with 2(S) or 4 nuts DIN 934 without or with distance plate (L) DIN 745 or DIN 5699

