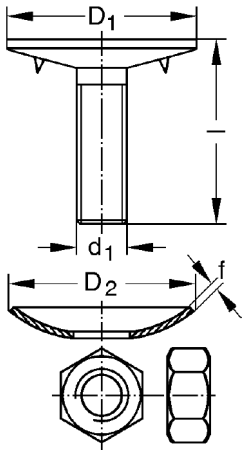


FASTENING FOR BUCKETS WITH BELT

FASTENING FOR BUCKETS WITH BELT



Elevator-bucket bolts most similar DIN 15237,
hot forged, with washer and hexagonal nut DIN 934

Thread	d1	[mm]	M7	M8	M10	M12
Length	l	[mm]	20-30	20-40	30-50	35-60
Head-diameter	D1	[mm]	26	30	35	40
Washer	D2 x f	[mm]	32x1,5	32x1,5	40x2	50x2

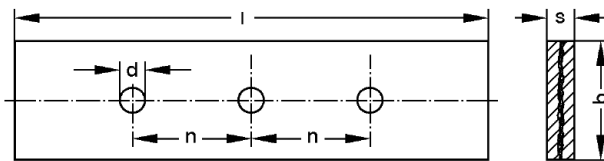
Elevator-bucket bolts most similar DIN 15237, small head,
hot forged, with washer

Thread	d1	[mm]	M6	M7	M8
Length	l	[mm]	20-25	20-30	25
Head-diameter	D1	[mm]	17	23	25
Washer	D2 x f	[mm]	25x1,25	28x1,5	32x1,5

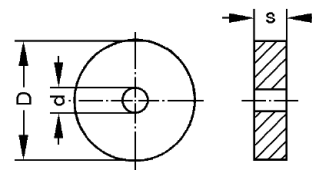
On request certain dimensions with nuts according to DIN 985, galvanized, completely packed.

Base between bucket rear wall and belt

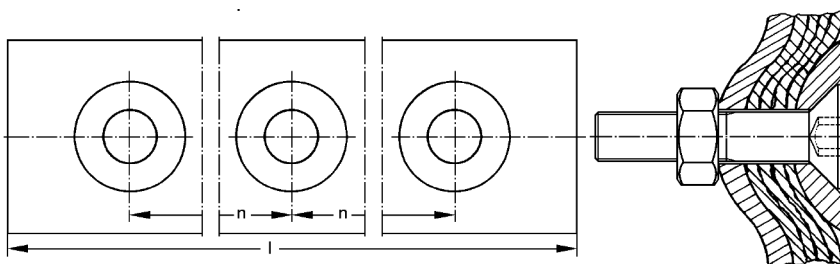
Soft-rubber with plies or cellular rubber



Solid rubber disk



Half-oval sheet 40 x 10 mm or 50 x 12 mm according to DIN 1018
dependent of the bucket width one-piece or multisectional



on request with flat head countersunk socket cap screws M10 x 50 or M12 x 50 to DIN 7991

