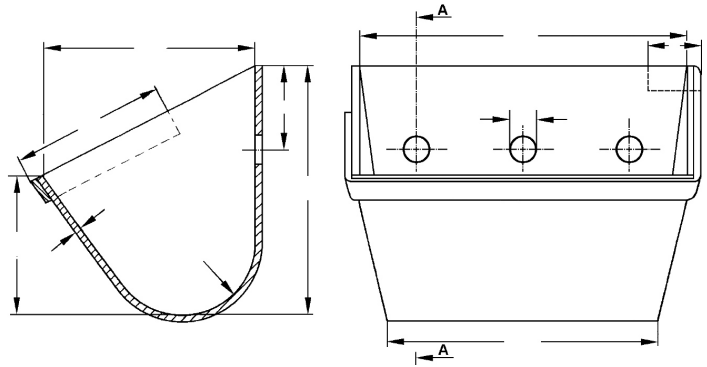
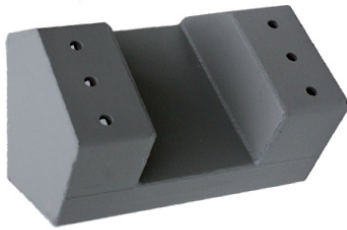
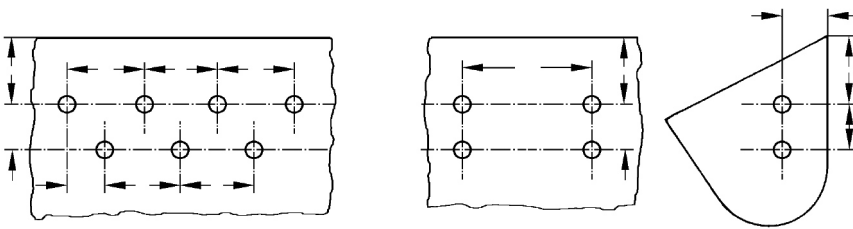


ELEVATOR BUCKETS, WELDED FOR CENTRAL CHAIN



ARRANGEMENT OF HOLES



- Moulded recessed holes DIN 15236 page 1
 - Back wall flat DIN 15236 page 1
 - Back wall continuous corrugated for fastening with half-oval steel
 - Holes DIN 15236 page 3
 - Holes DIN 15236 page 4
-
- Reinforced edges:.....x..... (e.g. 40x5)
 - front 3-sided 4-sided
 - top side continuous welded, underside with tack weld
 - top side and underside continuous welded
 - build-up welding with..... electrode front 3-sided
 - Back wall with flat-bar:x.....x..... (e.g. 120x50x6)
 - Side wall with flat-bar:x.....x..... (e.g. 120x50x6)
 - Back wall with plate:x.....x..... (e.g. 400x120x6)
 - Welding on the inside: continuous mm tack welded

