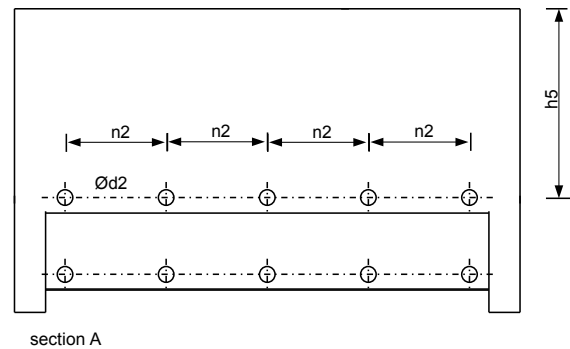
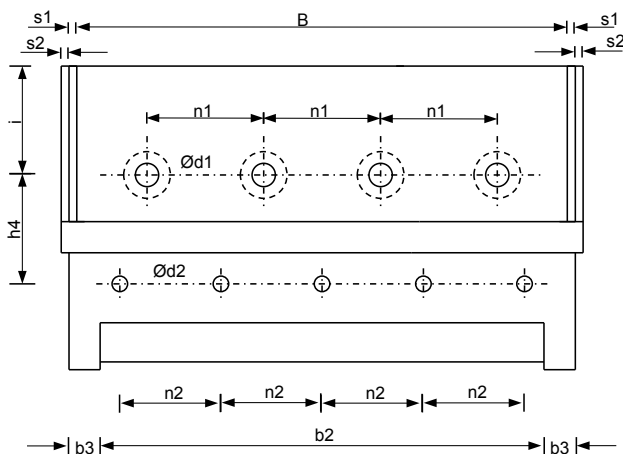
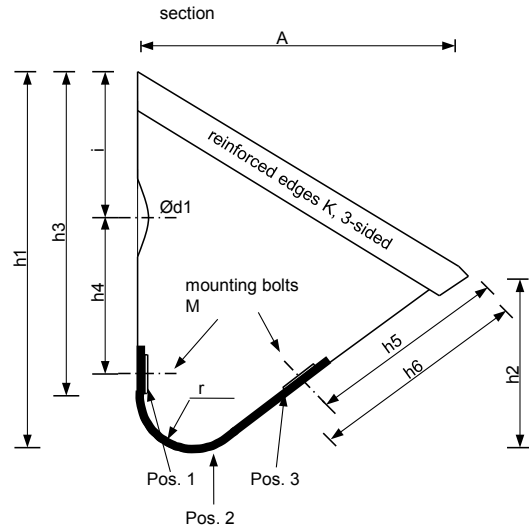
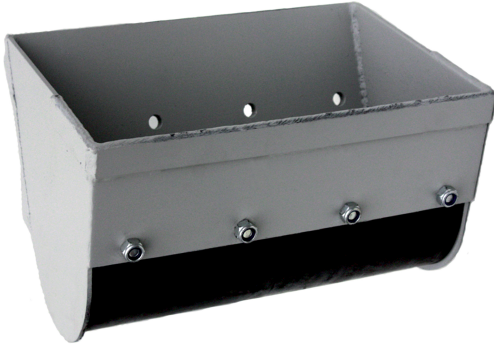
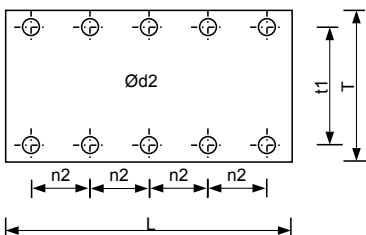


WELDED BUCKETS WITH RUBBER BOTTOM

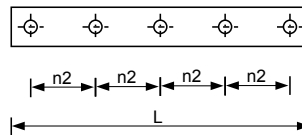


Pos. 2, rubber LxUxT, X° Shore

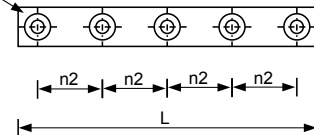


Ød2 with countersunk

Pos. 1, sheet LxHxs3



Pos. 3, sheet LxHxs3



A throat depth

B width

h1 back height

h2 front height

r radius of the bottom

i pitch of hole to edge bucket – middle row of holes

n1 pitch of holes bucket = fastening on the belt

d1 hole diameter for belt fastening

K reinforced edge width and thickness

h3 height metall sheet back wall

h4 middle row of holes – end metall sheet back wall

h5 middle row holes – end metall sheet front wall

h6 length metall sheet front wall

M mounting bolt Ø and length

d2 diameter for mounting bolt rubber bottom

b2 notch for rubber bottom

b3 metall edge of the bottom

n2 pitch mounting bolts for the rubber bottom

L length mounting plate rubber bottom = length rubber bottom

U thickness rubber bottom

T width rubber bottom

t1 distance raw holes rubber bottom

H width mounting plate rubber bottom

s3 thickness mounting plate rubber bottom

x shore-hardness and type of material of the rubber bottom

